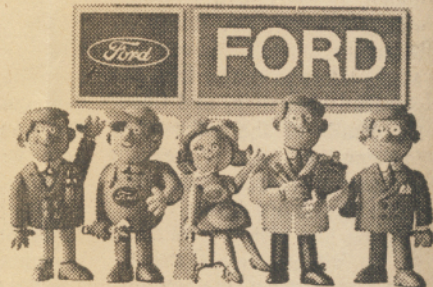


# Pinto is different where it counts, including a price \$199 less than VW 113\*

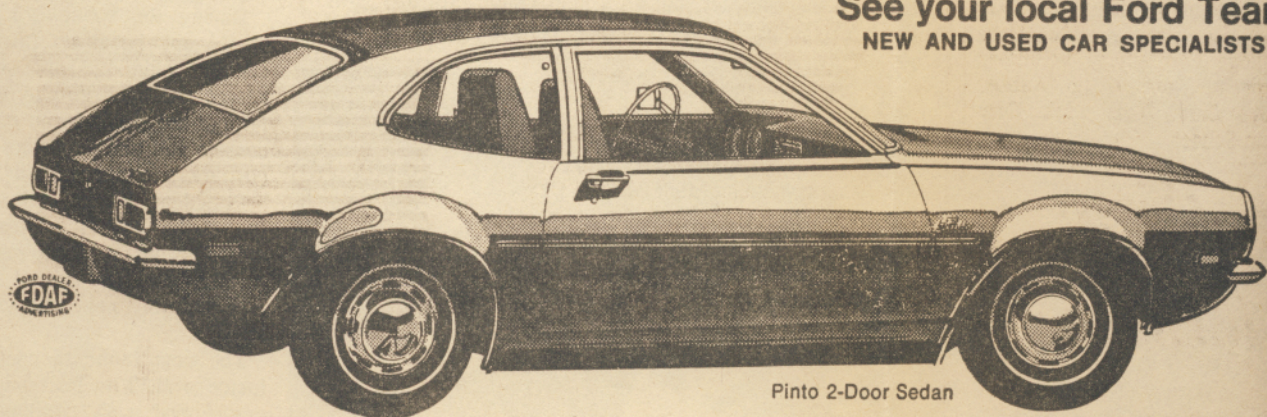
## PRICE FACTS

Pinto .....	\$1960
Vega .....	\$2060
Datsun 510 .....	\$2121
Toyota Corolla 1600 .....	\$2110
VW Super Beetle 113 .....	\$2159

Now that you've looked into its price advantages, look into Pinto itself. Take a test drive and note the advantages (and the fun) of Pinto's features: American-expressway power. Precise rack-and-pinion steering. Wide stance for better road stability. A tiny turning circle for easy parking. Plus self-adjusting brakes. And Pinto only needs routine maintenance at 6000-mile intervals. Fun-test Pinto at your Ford Dealers!



See your local Ford Team  
NEW AND USED CAR SPECIALISTS



Pinto 2-Door Sedan

\*Based on a comparison of sticker prices for base 2-door models. Optional white sidewalls, Accent Group and Rear Flipper Window (all shown), plus any dealer prep and destination charges and taxes are extra.

**STEVE ALOI FORD, Inc.**  
Rt. 11, Hinsdale Rd., Mattydale, N.Y.

**ROMANO FORD, Inc.**  
301 Erie Blvd., W. Syracuse, N.Y.

**KOERNER FORD, Inc.**  
805 W. Genesee Syracuse, N.Y.

**REYNOLDS MOTORS, Inc.**  
2525 Erie Blvd., E. Syracuse N.Y.

SEE YOUR NEAREST AUTHORIZED FORD DEALER